

TECHNICAL SPECIFICATIONS

SOPIX²

Size 1

External dimensions.....25 x 39mm
 Active surface area.....600mm² (20 x 30mm)
 Number of pixels.....1.50million

SOPIX inside system

Technology.....CMOS + scintillator+ optic fibre
 Pixel size.....20µm x 20µm
 Theoretical resolution.....25lp/mm
 Real resolution.....>12lp/mm
 Supplied imaging software.....Sopro Imaging
 TWAIN module.....Yes

SOPIX² USB connection

Connection.....USB 2.0
 Total cable length.....3.70m

Size 2

External dimensions.....31 x 42mm
 Active surface area.....884mm² (26 x 34mm)
 Number of pixels.....2.21millions

SOPIX²

Technology.....CMOS + scintillator + optic fibre
 Pixel size.....20µm x 20µm
 Theoretical resolution.....25lp/mm
 Real resolution.....>18lp/mm
 Supplied imaging software.....Sopro Imaging
 TWAIN module.....Yes

SOPIX inside USB connection

Connection.....USB 2.0
 Sensor cable length.....0.70m

PSPIX²

System

Resolution..... 20 lp/mm
 Scan Time (fast mode).....1,6s - 2,7s
 Scan Time (high definition mode).....2,1s - 3,6s
 Connection..... Ethernet RJ-45
 Dimensions..... L. 154 x D. 204 x H. 193 mm
 Weight.....2,6 kg
 Operating voltage..... 100 - 240V ~ 50 - 60 Hz

Imaging Plates

Dimensions IP Size 0.....22 x 35 mm
 Dimensions IP Size 1.....24 x 40 mm
 Dimensions IP Size 2.....31 x 41 mm
 Dimensions IP Size 3.....27 x 54 mm
 Dimensions IP Size 4 (3 x IP Size 3).....69 x 54 mm

COMPUTER CONFIGURATION

Windows® minimum configuration required

Operating system.....Windows 7 SP1
 Processor.....Core 2 Duo - 3GHz
 RAM.....2 GB
 Hard disk.....250 GB
 Graphic card..... 512 MB RAM unshared memory
compatible DirectX 9
 Screen resolution..... 1280 x 1024
 Ethernet board..... 100 Mbps - 1 Gbps

MAC® minimum configuration required

Computer.....MacBook® Pro 13.3" or iMac® 21.5"
 Operating system..... OS X Mavericks
 Processor..... Intel® Core 2 Duo
 RAM.....2 GB
 Ethernet board.....1 Gbps

For Yosemite and El Capitan operating systems, a Mac computer from 2013 or later is required.

Windows® minimum configuration required

Operating system.....Windows 10
 Processor.....Intel Core i5
 RAM.....4 GB
 Hard disk.....1 TB
 Graphic card..... Chipset Nvidia® or ATI®
 2 GB unshared memory compatible DirectX 9 or more
 Screen resolution.....1280 x 1024 or more
 Ethernet board.....1 Gbps

MAC® minimum configuration required

Computer..... iMac 27"
 Operating system..... OS X El Capitan
 Processor.....Intel Core i7
 RAM.....4 GB
 Ethernet board.....1 Gbps

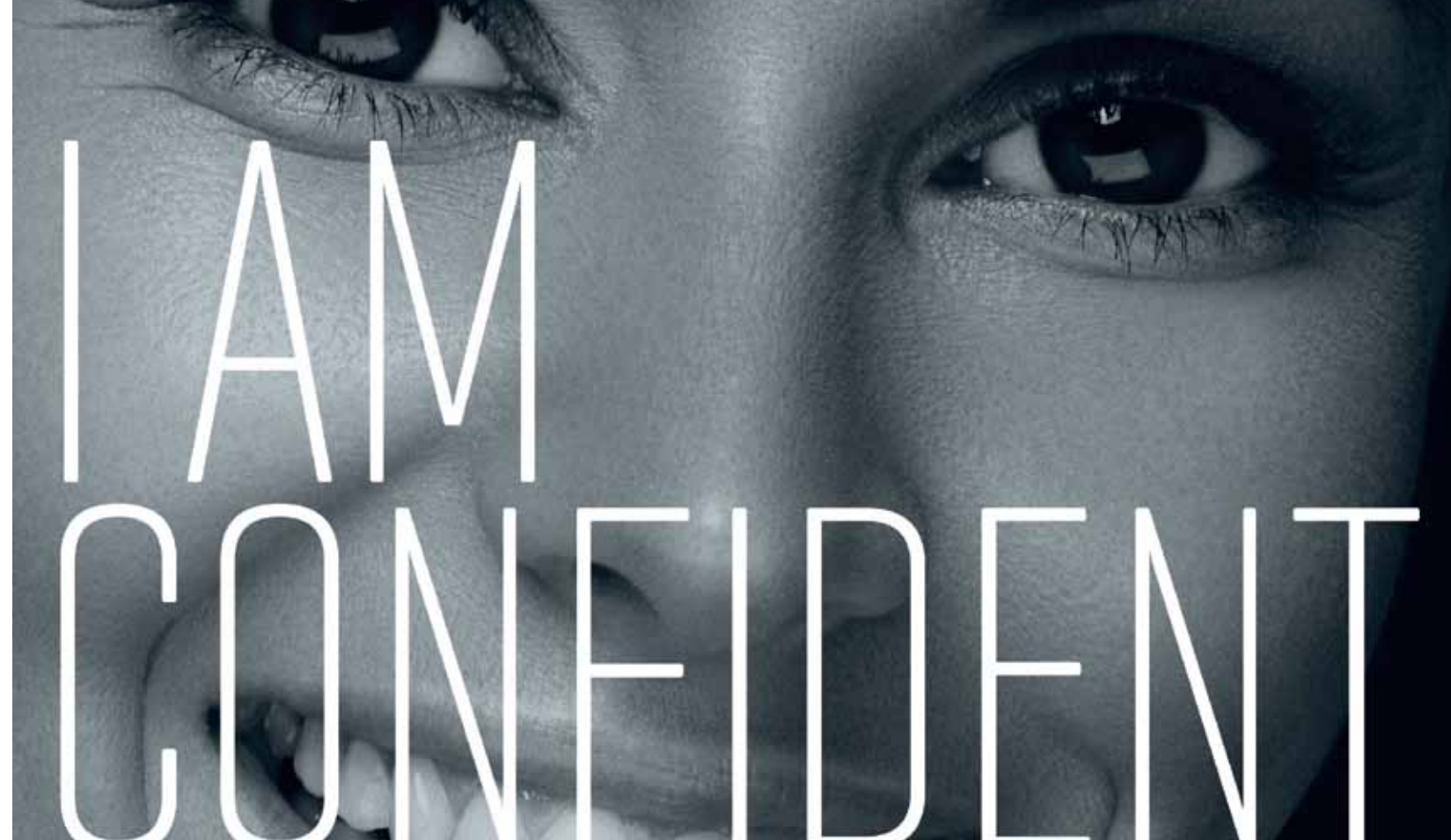
Note: In the case of SOPIX inside and SOPIX² inside, the IEC 60601-2-65 norm requires for each X-Ray intraoral system with an onboard digital sensor to use a square collimator.

Note: The data transfer from the intraoral system X-Mind unity to SOPRO® Imaging is not available on SOPRO® Imaging Mac version yet.

The medical devices for dental care SOPIX® Series are of class IIa and manufactured by SOPRO®, notified body LNE/GMED, X-Mind unity is of class IIb and manufactured by DE GOTZEN, notified body DNV - CE 0434. These medical devices are not refunded by health insurance organizations. Read carefully the instructions on the labelling before use.

The medical device for dental care PSPIX® is of class IIa and manufactured by SOPRO® notified body LNE/GMED. This medical device is not refunded by health insurance organizations. Read carefully the instructions on the labelling before use.

PSPIX® and SOPRO® are registered trademarks of SOPRO. "All other trademarks cited herein are the property of their respective owners"



PSPIX²

The cordless
 imaging plate scanner



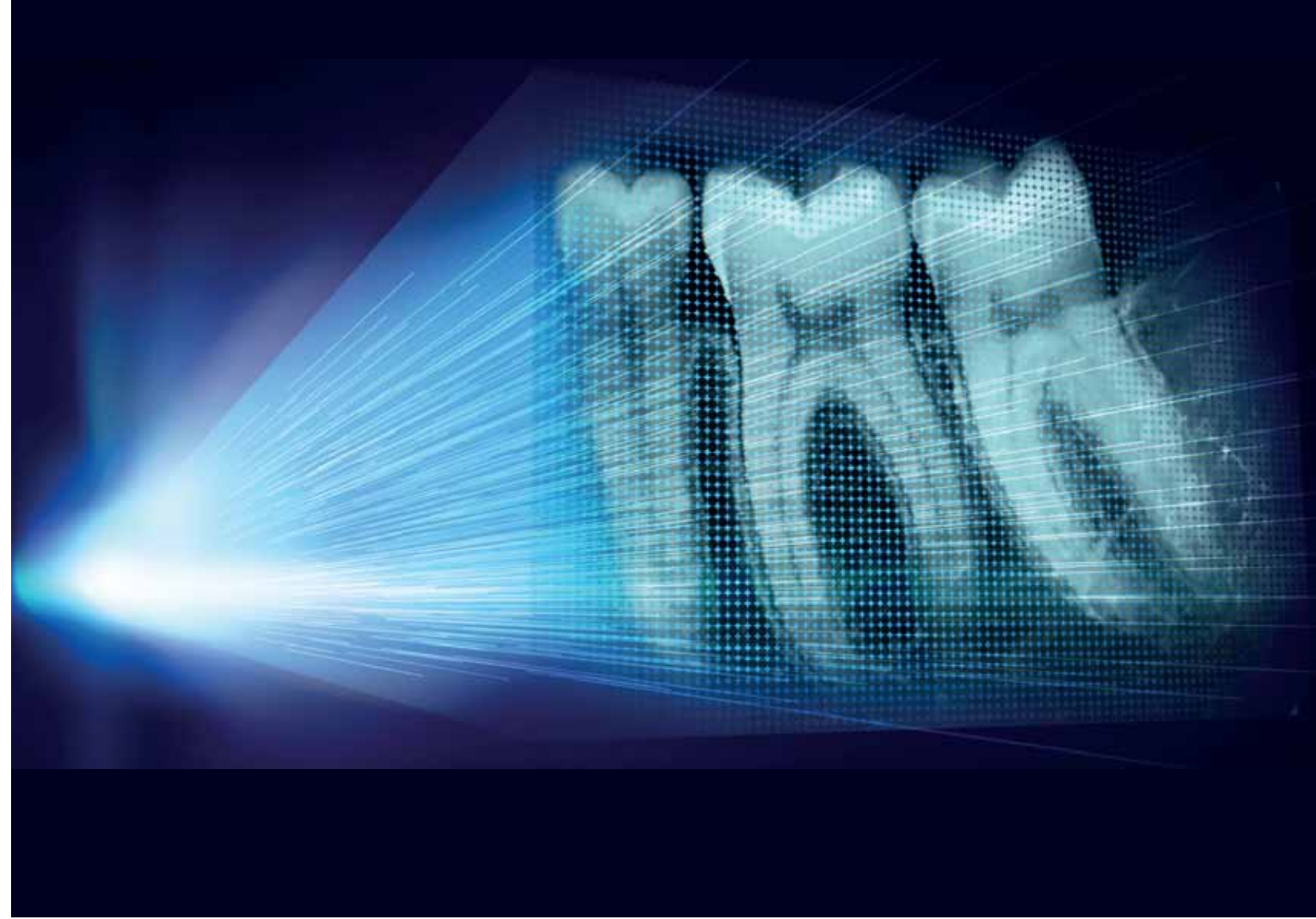
F0371 / February 1, 2017

SOPIX²

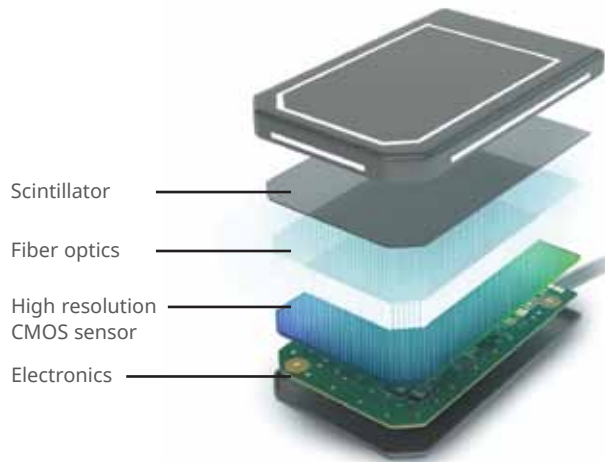
A successful image every time with
 minimum exposure to radiation



STRIKING CONTRAST FOR A MORE RELIABLE DIAGNOSIS



LEADING EDGE TECHNOLOGY



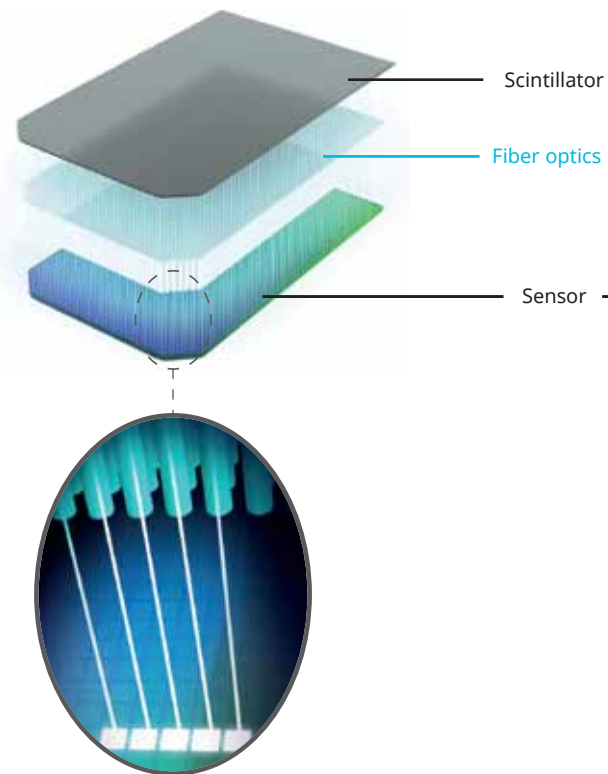
MORE INVENTIVE

Better differentiation of dental tissue

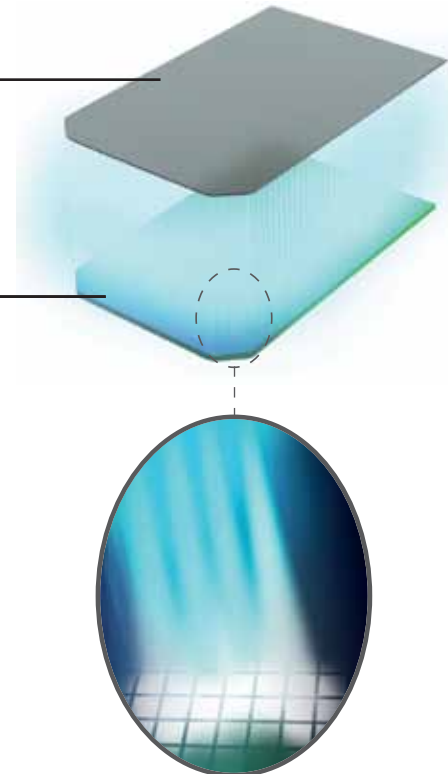
SOPIX® sensors surpass the limits of radiological examinations by offering **greater differentiation of dental tissue.**

This technological achievement is based on the use of **broad spectrum optical** microfibers for the guided transmission of photon emissions in order to provide **highly contrasted images.**

WITH FIBER



WITHOUT FIBER



LESS INVASIVE

A more reliable diagnosis

The different tooth anatomic structures, such as the bone, roots, pulp... are highlighted with **extreme precision** in the image.

Your diagnosis is **faster** and **more accurate!**



SOPIX²

A successful image every time with minimum exposure to radiation



Ace
technology

THE PERFECT FIT FOR YOUR CLINICAL PRACTICE



Endodontics



Pediatric



Cariology



HIGH-QUALITY IMAGES

SOPIX sensors provide **accurate images** and **striking contrast** to ensure a **reliable diagnosis**.

DESIGNED FOR YOUR PRACTICE

Two sizes are available depending on **patient morphology** and **clinical applications**.



Periodontics



Periapical



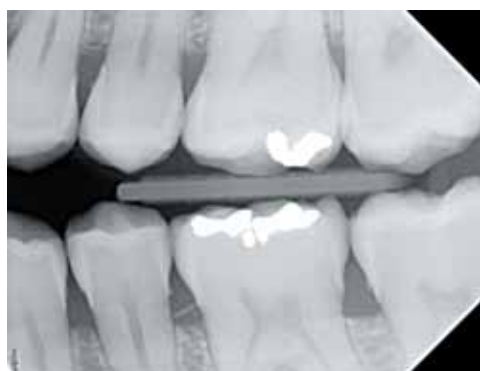
ACTEON suite imaging

A QUALITY IMAGE VIA AN INTERFACE THAT IS SIMPLE, QUICK, INTUITIVE

The **ACTEON® Imaging Suite** software offers intuitive navigation with the mouse and advanced functionality. It alone lets you manage all of your images, from scanning to viewing images from all **ACTEON®** imaging devices (CBCT, Panoramic, intraoral digital X-ray system, intraoral camera, etc.) and much more.



Bitewing



Implantology



WINDOWS
COMPATIBLE

MAC
COMPATIBLE

A QUALITY IMAGE EVERY TIME WITH MINIMAL EXPOSURE TO RADIATION

CUTTING EDGE TECHNOLOGY

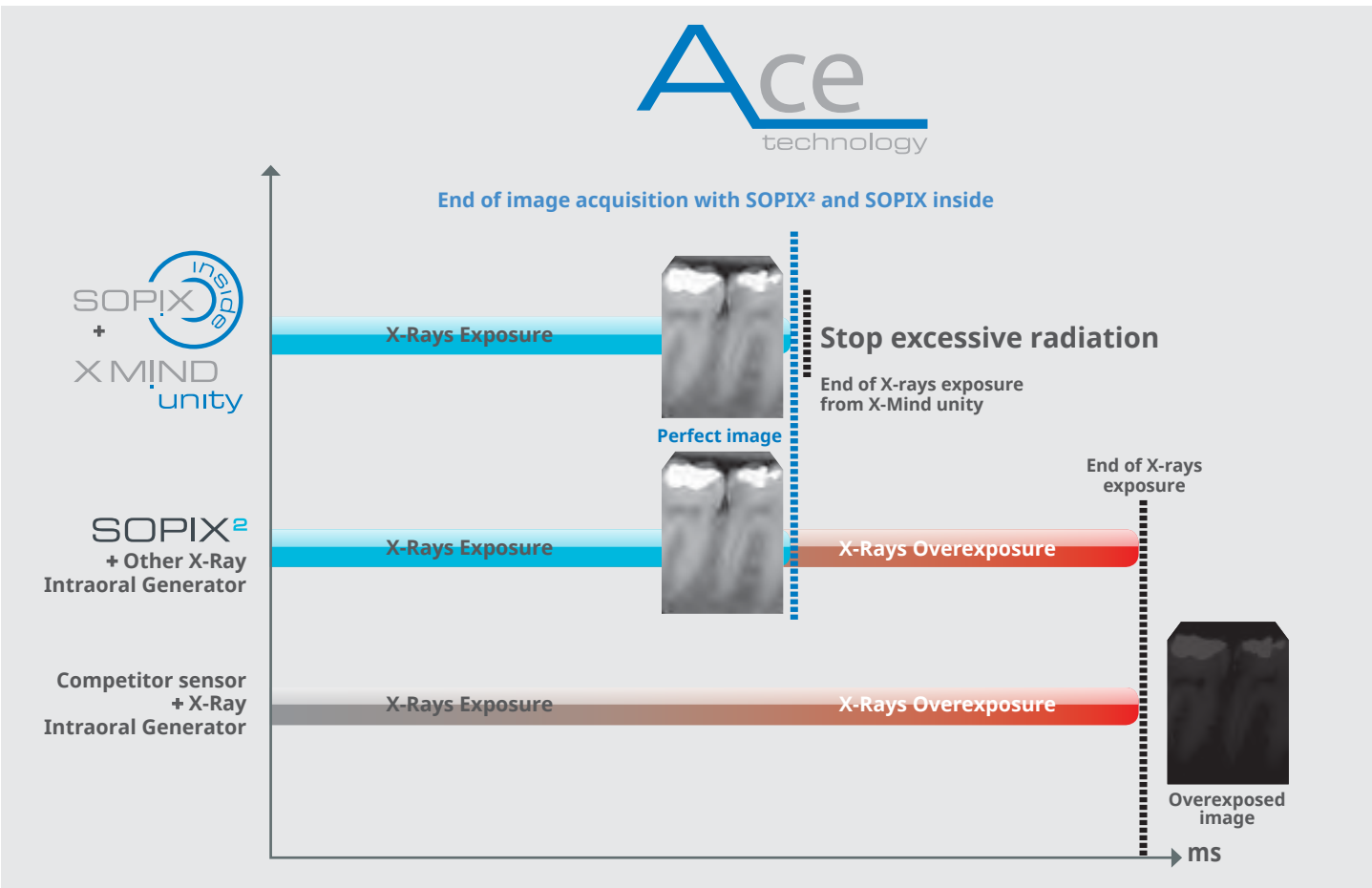


Available in all **SOPIX** series sensors, patented **Ace** technology (**Automatic Control Exposure**) analyzes in real-time, the amount of X-rays accumulated by the sensor. It automatically freezes the image acquisition as soon as the sensor receives the radiation required to produce the perfect image.

Eliminate the risk of over exposing the image!

Combined with the **X-Mind unity** intraoral X-ray generator, **SOPIX® inside** with **ACE®** technology limits the emission of **x-rays** during the acquisition to the necessary amount for the patient's morphology. It uses the minimum dose required to provide a high-quality image..

"ACE is the combination of advanced sensor technology, digital power electronics and the know-how of two diagnostic imaging divisions. The synergy between La Ciotat (FRANCE) and Milan (ITALY) R&D teams gave birth to an innovative concept focused on patients, with outstanding image quality."



FOR A SAFER PROCESS

With **SOPIX** digital sensors and its patented **ACE®** technology, you acquire **successful X-rays every time**, meaning reliable and accurate diagnosis. You will save time by avoiding the need for retakes.

Using **X-Mind unity** intraoral X-ray generator with **SOPIX inside**, the patients receive the minimum dose required for their dental morphology. You protect your patients and your staff from any unnecessary radiation exposure.

ACTEON Imaging Suite records the **X-Mind unity** settings as well as the effective dose received by the patient. This ensures permanent traceability for every patient.

PATIENT AND STAFF PROTECTION



STOP EXCESSIVE RADIATION

Communication between the X-Mind unity and SOPIX inside sensor provides **unique benefits**.
When SOPIX inside has received enough energy to provide an **exceptional image quality**, it tells the X-Mind unity to **stop the X-ray emission**.



Effective protection for minimal exposure
The patient only receives the necessary dose adapted for their dental morphology, which **protects them from unnecessary overexposure**.

ACTEON Imaging Suite, always one step ahead

ACTEON Imaging Suite systematically records the X-Mind unity settings as well as the effective dose received by the patient for each acquisition.

This ensures **permanent traceability** for every patient



EXCLUSIVE TRACEABILITY



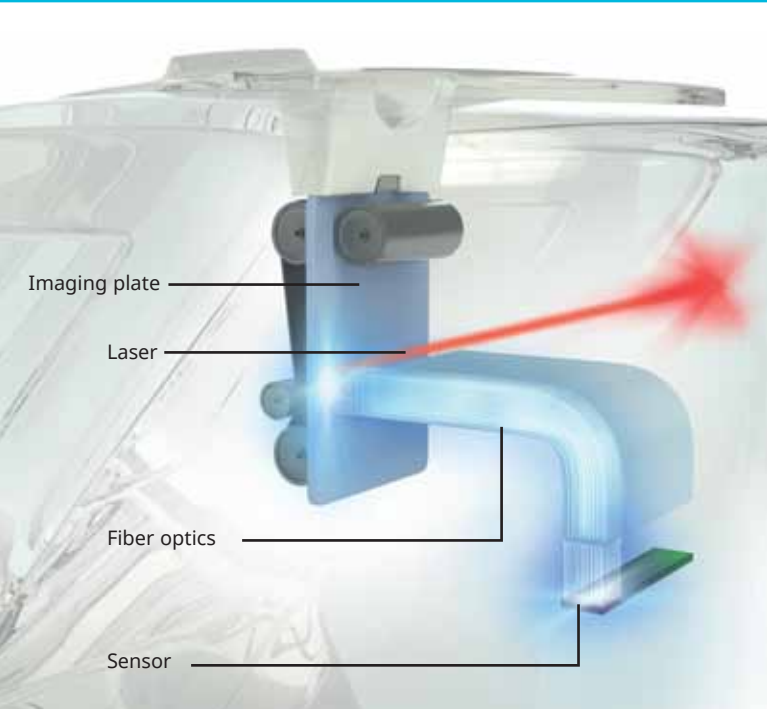
Outstanding working comfort
Through direct integration of SOPIX inside into X-Mind unity, connecting cables are hidden inside the X-ray unit.

The holder places the **sensor safely, within reach**, to prevent it from falling onto the floor.

Your working environment is **more ergonomic and productive**.



STRIKING CONTRAST PSPiX² FOR AN ACCURATE DIAGNOSIS

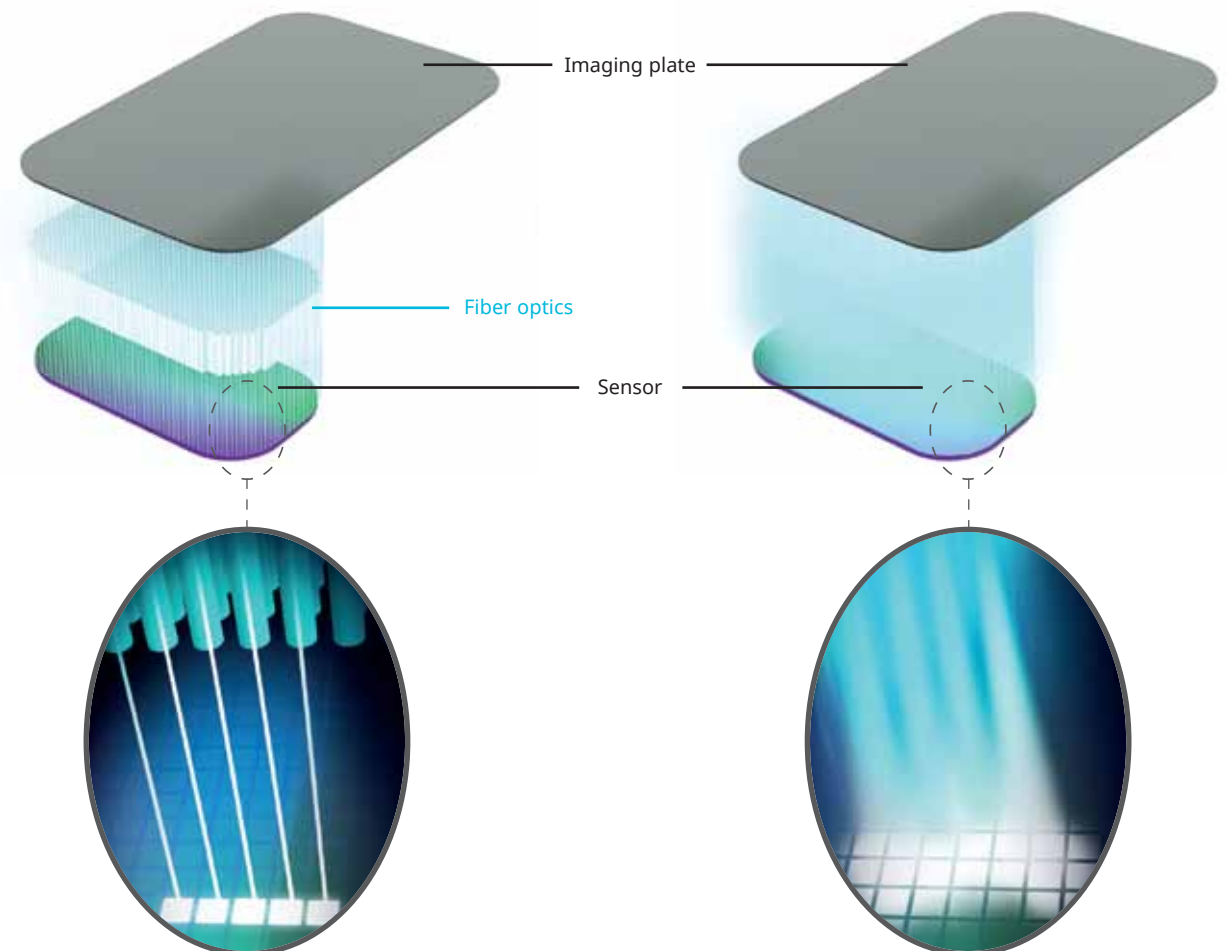


MORE INVENTIVE

Better differentiation of dental tissue

PSPiX² surpasses the limits of radiological examinations by offering **greater differentiation of dental tissue**.

This technological achievement is based on the use of **broad spectrum optical microfibers** for the guided transmission of photon emissions in order to provide **highly contrasted images**.



LESS INVASIVE

A more reliable diagnosis

The different tooth anatomic structures, such as the bone, roots, pulp... are highlighted with **extreme precision** on the image.

Your diagnosis is **faster** and **more accurate!**



PSPiX²

The cordless imaging plate scanner



I WANT A SCANNER FOR MYSELF

ACTEON INTRODUCES THE FIRST CORDLESS DIGITAL IMAGING SCANNER

The PSPIX² is

- SMALL** - compact size fits in any operatory
- INTUITIVE** - easy to learn and easier to use
- ELEGANT** - a perfect solution for digital imaging
- AFFORDABLE** - every chairside can be equipped for imaging

SO SIMPLE, JUST SHOOT AND SCAN!

With **PSPIX²** chairside, your images are available in seconds. All without leaving the room or your patient.



I WANT A SIMPLER AND MORE INTUITIVE SCANNER

PSPIX² IS SO INTUITIVE, SCANNING AN IMAGE HAS NEVER BEEN EASIER

AMAZING SIZE

Created with cutting edge technology, **PSPIX²** is the most compact dental phosphor plate system available.

SO SIMPLE

The large color touchscreen provides simple instructions for quick and easy use.

REVOLUTIONARY DESIGN

With clean lines and an elegant design, the **PSPIX²** fits perfectly into any practice.

TRUE INTELLIGENCE

Workflow has never been smoother or more efficient, enhancing your practice's productivity.



7.5"

AUTOCLAVABLE

PSPIX² features optional removable parts for easy disinfection. The autoclavable parts further provide a high level of protection

ENHANCED IMAGE QUALITY

PSPIX² provides accurate, sharp and contrasted images to ensure reliable clinical diagnosis

Bitingwing



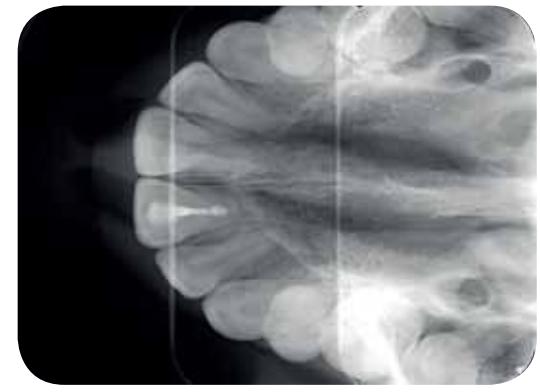
Implantology



Cariology



Occlusal



SOFTWARE CAPABILITIES

PSPIX² is delivered with **ACTEON Imaging Suite** software, which is easy to integrate and used by thousands

ACTEON Imaging Suite is compatible with **MAC®** and **Windows®** operating systems

WINDOWS
COMPATIBLE

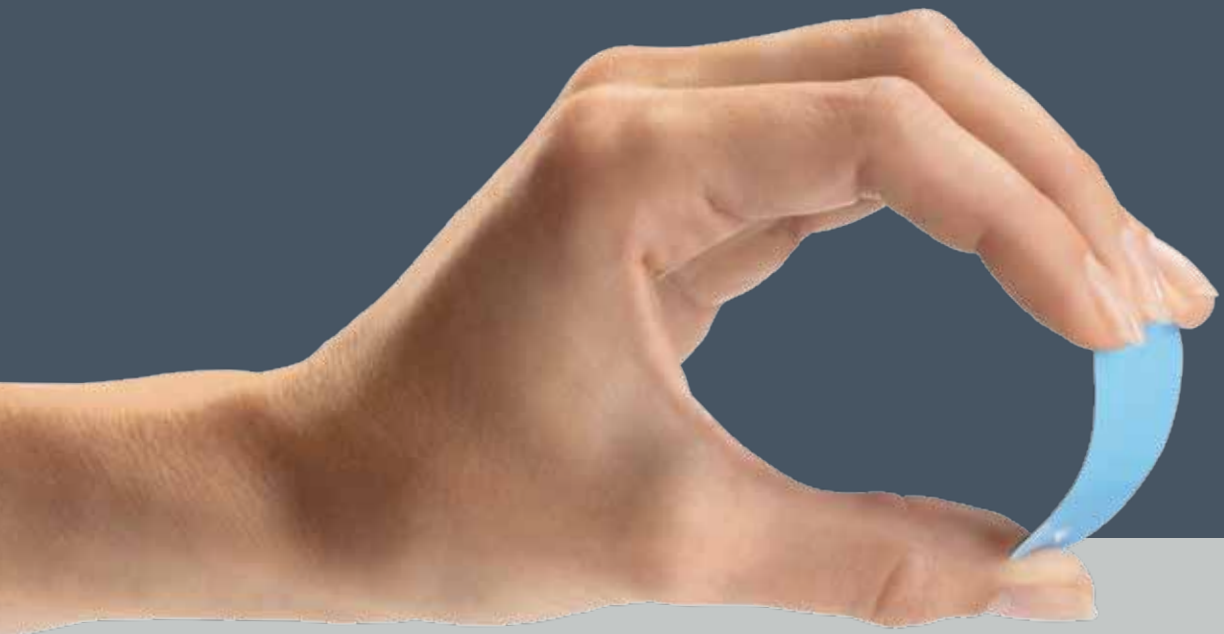
MAC
COMPATIBLE



I CAN SCAN EVERY PATIENT

PSPIX² EXCEEDS YOUR TREATMENT EXPECTATIONS

PSPIX²



OUTSTANDING PATIENT COMFORT

With increased flexibility, the wireless **ACTEON** imaging plates provide greater comfort for all your patients.

- Ideal for both children and adults
- Imaging plates are available in sizes: 0, 1, 2, 3
- Endorsed by pediatric dentists worldwide



I CAN SHARE IT

PSPIX² IS ALSO DESIGNED FOR MULTIUSER ENVIRONMENTS



LET THE LIGHT GUIDE YOU...

Check the status of **PSPIX²** at a quick glance!



Blue: Available



Purple: Scanning



Yellow: Occupied

JUST CLICK AND SCAN!

With award winning **ACTEON Imaging Suite** software the **PSPIX²** can be shared across your operatories. Simply reserve the scanner or select your workstation on the touchscreen, insert your plate and let the **PSPIX²** do the rest... Images scan in seconds and are immediately available.



FULLY AUTOMATED PROCESS

- **AUTO-ACCESS** - door only opens when a plate is detected
- **AUTO-DETECT** - plate size is automatically detected
- **AUTO-SCAN** - **PSPIX²** scans and optimizes images before saving them into a patient record
- **AUTO-EJECT** - plates are automatically erased and ejected
- **ECO-MODE** - enters standby-mode to save power when not in use