

Smart accessories

The RVG 6200 system comes with all the accessories you need to make the most out of the system, including a sample pack of disposable hygienic sheaths, positioners, and mounting holder. Ask about all available accessories.



Toothbrush-type holders



Hygienic sheaths

Technical Specifications

	RVG 6200 Size 1	RVG 6200 Size 2
Technology	CMOS Scintillator Optical Fiber	CMOS Scintillator Optical Fiber
Cable Length	2,8 meters	2,8 meters
Pixel dimension	19 microns	19 microns
True (measured) resolution	24 lp/mm	24 lp/mm
Active area	22,2 x 29,6 mm	26,6 x 35,5 mm
Overall dimensions	27,6 x 37,7 mm	32,2 x 44,2 mm
Sensor plate thickness	7,3 mm	7,3 mm
Gray scale	4096 grey levels (12 bits)	4096 grey levels (12 bits)
Input voltage (from USB interface)	5V	5V



RVG 6200

Digital technology shaped around you



www.MDENT.ir

Partnering with you for the future

The RVG 6200 now offers an affordable, unlimited lifetime warranty option. With this option, you receive a variety of perks including free replacement, overnight replacement⁴ and the ability to cover an unlimited number of sensors on the plan.

To see adaptable technology in action, please call **800.944.6365** or visit **www.carestreamdental.com**.



www.MDENT.ir



© Carestream Health, Inc. 2015. RVG is a trademark of Carestream Health. 12620 DE RVG 6200 SS 0415

¹Sensor manufacturers generally publish theoretical resolution, which is a calculation of what the sensor is capable of in an ideal world, based solely upon the number of pixels and pixel size of the CMOS sensor. In contrast, the RVG 6200 true resolution of 24 lp/mm adds in the components of the finished product, including sealants, shock layers, scintillator, and protective housing, as well as detector noise to determine the measured resolution in lp/mm from an image actually acquired by the sensor. RVG 6200 is a work in progress and may not be available in some countries.

²Gakenheimer, David C., "The Efficacy of a Computerized Caries Detector in Intraoral Digital Radiography." Journal of the American Dental Association 133 (2002): 883-890

³Tracy, Kyle D., "Utility and effectiveness of computer-aided diagnosis of dental caries", General Dentistry 59-2 (2011): 136-144

⁴Only available on replacement requests received before 3 p.m. EST

Technology that adapts to you, redefining the way you practice

Discover how accommodating technology can be with the RVG 6200—Carestream Dental's latest innovation in digital intraoral sensors. With a simplified workflow designed to work for you (not the other way around), the RVG 6200 features straightforward installation and integrates easily with most imaging and dental practice management software. Of course, the image is most important when it comes to intraoral sensors. That's why the RVG 6200 features the CS Adapt module, a set of user-defined image processing tools that allow users to establish their own default settings to capture the right image every time. Best of all, you can start using the RVG 6200 immediately—all while improving your current workflow. After all, why should you adapt to technology when technology can adapt to you?

- 24 lp/mm true image resolution promotes maximum diagnostic precision¹
- New CS Adapt module allows users to define up to four favorite anatomic modes from 40 filters in 10 pre-set families, resulting in a customized comfort zone for every appointment
- Ergonomically optimized rear entry cable attachment facilitates comfortable positioning
- Sensor cable is 20% thinner and more flexible than previous models of RVG sensors for improved sensor placement
- Workflow is reduced by two steps and is optimized to the extreme: Position. Expose. View.



www.MDENT.ir

Focus on your work—the RVG 6200 will do the rest

Your ideal workflow

Imagine if you never had to wait to acquire an image. How much time would you save if your system was always ready to use? With the RVG 6200, arming the sensor or opening the user interface before each use is no longer necessary—the system is ready whenever you are. Simply position, expose, and view for seamless image acquisition.

Responding to your preferences

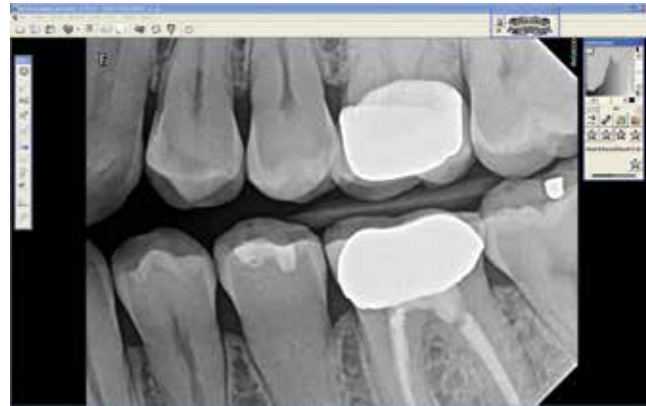
Optimize image contrast according to your diagnostic needs or visual preferences with the CS Adapt module—the new feature that lets you establish your own default settings for personalized image processing. Choose from either pre-set image enhancement filters or define your own, creating a customized comfort zone for every appointment.

Proprietary algorithms—optimized specifically for the RVG 6200—provide state-of-the-art imaging processing with just the touch of a button. With the CS Adapt module, the RVG 6200 now delivers the most sophisticated and powerful image processing filters available to improve diagnostic efficiency.

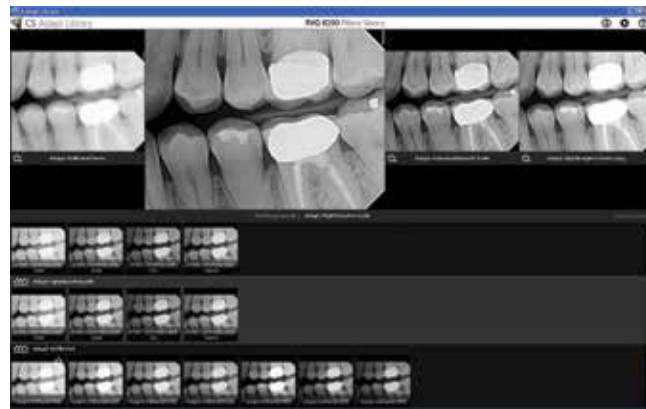
Simple yet comfortable sensor placement

The RVG 6200 sensor features an ergonomically optimized rear-entry cable that reduces bulk at the cable point of entry, allowing for easier placement and positioning of the sensor, improving image acquisition. Additionally, the newly designed reinforced cable is 20% thinner than previous RVG sensors to facilitate better sensor placement in the patient's mouth.

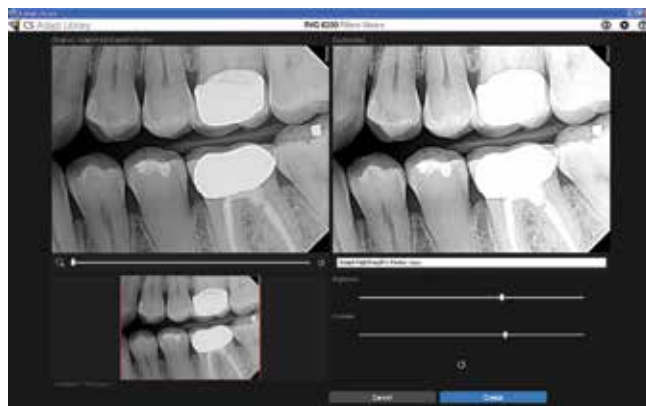
The thinner, more flexible cable specifically allows for more comfortable sensor placement and helps simplify bitewing acquisition. RVG 6200 sensors include a set of RVG 6200 positioning devices so the sensor can be immediately implemented into the practice.



Access four favorite anatomic modes directly from the control panel with a single click.



Select four favorite anatomic modes from 40 preset filters in 10 families.



Define your own custom filter

High exposure range

The RVG 6200 sensor provides extreme flexibility by allowing for image capture over a wide range of exposure. Both accommodating and versatile, the RVG 6200 sensor does not require time-consuming fine tuning of exposure to produce a clinically useful image.

Additionally, a convenient dose indicator alerts you of potential over- or under-exposure issues so you can quickly adjust the settings as necessary while refining your expertise.

Intuitive installation for an easy transition

With the RVG 6200, we have created a supremely easy installation and maintenance process, making it the ideal choice for those transitioning to digital imaging for the first time, converting from another digital system, or upgrading from a previous generation RVG sensor.

Once up and running, the post-installation tool verifies that the sensor is correctly installed and checks communication with the software. Service tools are provided for troubleshooting purposes and provide feedback that helps you become more familiar with the technology.

The beauty of peace of mind

Pulls, bites and drops—our testing process simulates everyday occurrences in a busy dental practice. With the RVG 6200 you're more than prepared for any situation that tests hardware durability to the limit.

RVG 6200 sensors are tested to assure you a level of waterproof durability—allowing them to be fully submersed for infection control, while the shock resistant casing is designed to protect the sensor from bites, shocks, and drops. For maximum durability, the cable must undergo over 100,000 hard flexions (the equivalent of 10 years of intense use under normal conditions), and the connection points are reinforced to withstand hard pulls and torsions.

Exclusive technology for better patient care

Based on exclusive technology and only available with RVG sensors, Logicon Caries Detector Software is clinically proven to help dentists find up to 20% more interproximal caries than with traditional methods² and more than doubles dentists' capability to detect early caries in the dentin that should be promptly restored.³ Logicon is also the only commercially available FDA-approved computer-aided radiographic caries diagnosis software.



High Image Quality



Convenient Quickstart Guide



Maximum Durability



User-Defined Image Processing Tools

